

Proudly Zambian

# FLOORS AND MORE

Product Brochure



## MODERN CONCRETE FLOORING SOLUTIONS FOR:

**HOMES | SCHOOLS | WAREHOUSES |  
HOTELS & LODGES | SHOPS | OFFICES**

Office: 58 ROAN ROAD KABULONGA.

Contact: 260966912777

[www.floorsandmorezambia.com](http://www.floorsandmorezambia.com)

Facebook: Lusaka Concrete Floor Center

Pinterest: Floors and More Zambia

Instagram: Floors and More Zambia

## Sealers

**Flopoxy** – A solvent based epoxy sealer that is extremely hard wearing and finishes in high gloss. It can be used on counter tops, warehouses, screeds, wood and many other surfaces.

**Packaged** in 5l and 20l

**Coverage** is 8-10m<sup>2</sup> per liter per coat.



**Sealer Primer** – A water based concrete sealer that can be used on screeds, decorative concrete and walls. It is a film forming sealer that is also used as a sealer primer in decorative coatings applications.

**Packaged** in 5l and 20l.

**Coverage** is 6-8m<sup>2</sup> per liter per coat. 2 coats are recommended.



## Cement Based Pool Paint

Floors and More pool coating is a 2 pack combination of a liquid resin and a special waterproof cement with additives to ensure maximum adhesion and Enhanced color projection when submerged underwater.

It is available in 3 shades of blue only.

**Coverage:** 20-25m<sup>2</sup> per 20kg drum

Drying times: 4-6hrs

Recoat time: 4-6hrs. Do not exceed 24hrs

Recommended coats 2coats



## Urban Coat

Floors and More Urban Coat is a thin hard wearing decorative concrete coating that can be used on floors, walls, Countertops and Ceilings to achieve a rustic concrete finish, look and feel.

It is troweled on and is only 2-3mm thick. It is available in 12 different colors with an option of custom colors.

Its patterns are versatile and it can be laid seamlessly over a vast expanse. It doesn't require any control joints. It is **TIMELESS!**



---

## Pool Plaster

F&M pool plaster is a blend of concrete admixtures and pigments that do not fade both underwater and above ground. It is plastered on up to 6mm thick.

Available in blue only.

**Packaged** in 40kg bags

**Coverage** is up to 5m<sup>2</sup>



---

## Scree Colour Hardener

F&M Scree colour hardener is a blend of cement admixtures, special sand and pigments that is dry shaken and broadcast over wet concrete and troweled in to achieve a natural rustic concrete look and feel. It can be used indoors and outdoors in both commercial and domestic setups.

**Coverage:** 8-10m<sup>2</sup> per 25kg drum

**Packaged** in 25kg plastic drums

Seal with F&M Flopoxy for a premium glossy finish.



# Gallery

## Why buy from us?

- Local technical support.
- Product made locally for our local environment.
- Product is always available with 48hrs lead time.
- A wide range of colors and custom colors.
- Upmarket and exquisite product and finishes.
- Durable and easy to clean

## Uses

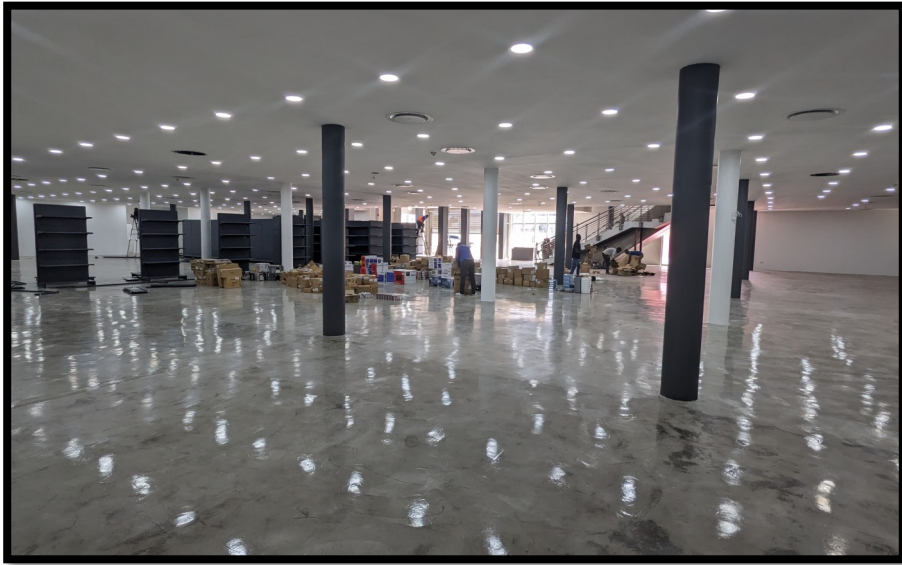
- Bathrooms
- Walls
- Floors
- Countertops
- Verandahs
- Ceilings
- Partition Boards







# Gallery





Floors & More... The perfect finishes

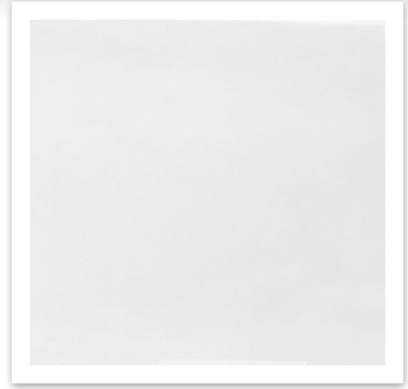




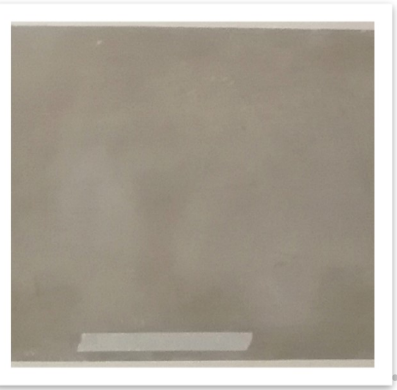
Mulungushi Brown



Kafue Grey



Luangwa Grey



Kafubu Brown



Luapula Grey



Lunga Black



Kabompo Brown



Zambezi Grey



Luena Dirty White



Chambishi Brown



Chongwe Black



Bangweulu White